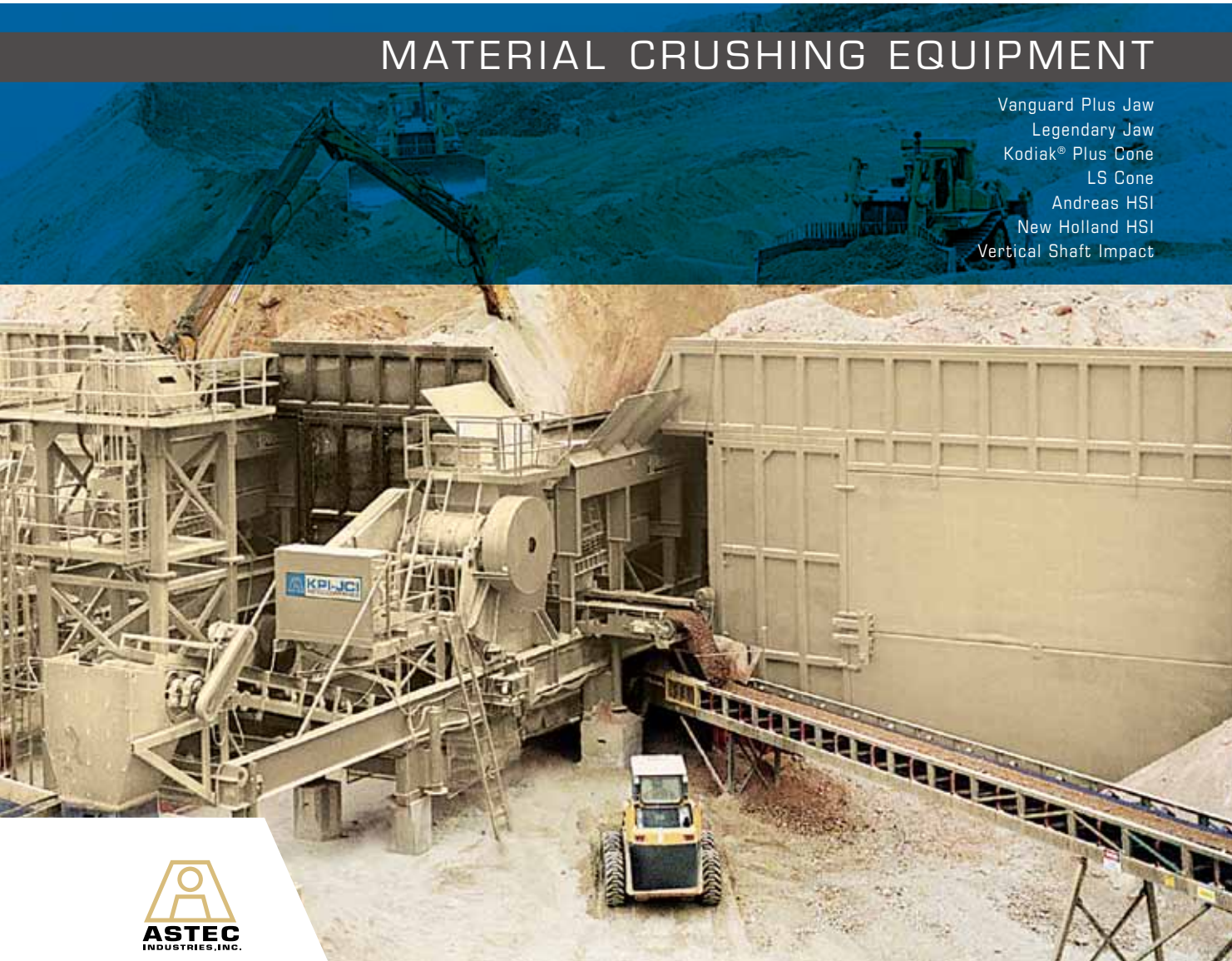




CRUSHING

MATERIAL CRUSHING EQUIPMENT

Vanguard Plus Jaw
Legendary Jaw
Kodiak® Plus Cone
LS Cone
Andreas HSI
New Holland HSI
Vertical Shaft Impact



AGGREGATE AND
MINING GROUP

VANGUARD PLUS

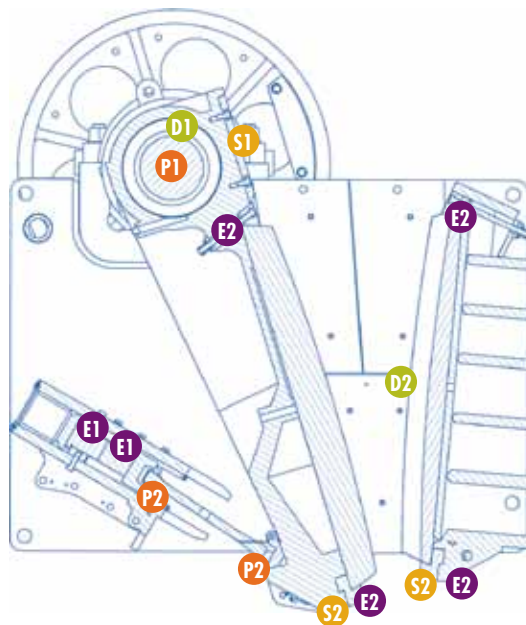
The Vanguard Plus Series from KPI-JCI represents the very latest in jaw crusher technology. Engineered to be the highest capacity jaw crusher on the market, you can expect your Vanguard Plus crusher to deliver up to 25% more tons per hour (tph) than other comparable crushers. Pair that with the Vanguard Plus Series' fierce durability and user-friendly design that keeps downtime to a minimum and you have a machine that will help you squeeze every cent of profit out of your operation.

PERFORMANCE

- P1 Forged Eccentric Shaft**
Provides 1 1/2 inches of stroke-increasing productivity.
- P2 Toggle Alignment**
Gives maximum crushing action.

DURABILITY

- D1 Self-Aligning Spherical Roller Bearings**
Unique, efficient bearing assembly provides added strength and reliable long-term service.
- D2 Side Base Wear Liners**
Three-piece design allows for replacement of high wear liners separately.



SAFETY

- S1 Barrel Protector Plate**
Guards against costly pitman damage.
- S2 Lower Retaining Lips**
Replaceable manganese retention bars protect the pitman and crusher base from costly damage.

EASE-OF-USE

- E1 Hydraulic Dual Wedge System**
Provides quicker CSS adjustment by eliminating cumbersome shims.
- E2 Jaw Die Retention Wedge**
Retains the jaw die without the use of problematic key and heel plates.

STANDARD WARRANTY

The standard warranty period is (2) years or two-thousand (2000) hours, whichever comes first, from date of delivery to the first end user.



Superior Capacity | Less Down Time | Unmatched Dependability

BENEFITS

Easy-to-use retention system speeds up jaw die replacement.

Innovative crusher design produces unmatched capacity.

Fly-wheel design reduces horsepower requirements and increases profits.

Hydraulic dual wedge system delivers quick closed-side setting adjustment.

MODEL	Jaw Opening (in / mm)	Weight (lbs / kg)	Capacity Up To (tph / mpth)
2640	26 / 660	29,500 / 13,393	240 / 218
2650	26 / 660	32,000 / 14,528	282 / 256
3055	30 / 762	50,000 / 22,700	528 / 479
3144	31 / 787	44,520 / 20,194	426 / 386
3165	31 / 787	56,000 / 25,402	692 / 628
3352	33 / 838	85,500 / 29,555	553 / 502
4450	44 / 1118	101,900 / 46,221	816 / 740

Based on material weighing 2,700 lbs. per cubic yard. Capacity may vary with the material characteristics. Larger settings may be obtained with other than standard toggle plate. Consult factory for details.



LEGENDARY JAW

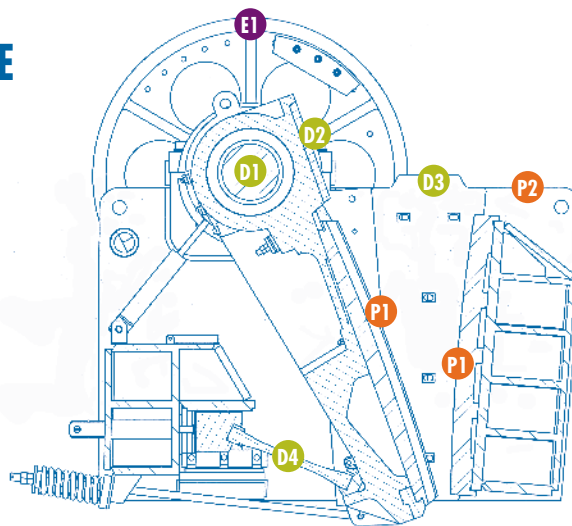
Proven performers, the Legendary Series of jaw crushers have set industry standards of durability since the 1930s. Extraordinary bearing life ensures years of reliable operation, delivering consistent performance with reduced downtime and low maintenance costs. The entry level crusher is perfect for smaller jobs, but the Legendary Series can handle all crushing needs with models up to 42" x 48".

PERFORMANCE

- P1 Reverse Jaw Dies**
Maximizing life, decreasing costs and increasing profitability.
- P2 Single Side Plate Base Construction**
Welded and machined for true alignment and long life.

EASE-OF-USE

- E1 Dynamically Balanced Flywheel**
Provides smooth crushing through the toughest of applications.



DURABILITY

- D1 Forged Eccentric Shaft**
Unique, efficient bearing assembly provides added strength and reliable long-term service.
- D2 Barrel Protector**
Guards against costly pitman damage.
- D3 Cheek Plates**
Two-piece manganese cheek plates protect the sides of the crushing chamber from wear.
- D4 Toggle Plate**
Available in multiple sizes for application versatility. Machined to ensure maximum life.



Proven Design | Consistent Performance | Low Maintenance

BENEFITS

Strong simple design delivers maximum durability and long life.

Excels in a wide range of applications.

Industry's largest eccentric shaft bearings provide reliable performance.

Multiple styles of jaw dies are available for each model.

MODEL	Jaw Opening (in / mm)	Weight (lbs / kg)	Capacity Up To (tph / mpth)
1047	10 / 254	16,940 / 7,700	89 / 81
1524	15 / 381	11,500 / 5,221	72 / 65
1536	15 / 381	17,500 / 7,945	136 / 123
1654	16 / 406	30,690 / 13,933	204 / 185
2036	20 / 508	21,000 / 9,525	187 / 171
2148	21 / 533	32,000 / 14,528	248 / 248
2436	24 / 610	29,500 / 13,393	273 / 225
2854	28 / 711	51,000 / 23,154	282 / 256
3042	30 / 762	43,500 / 19,749	357 / 324
3546	35 / 889	75,500 / 34,277	522 / 473
4248	42 / 1067	102,000 / 46,266	875 / 794

Based on material weighing 2,700 lbs. per cubic yard. Capacity may vary with the material characteristics. Larger settings may be obtained with other than standard toggle plate – consult factory.

KODIAK[®] PLUS

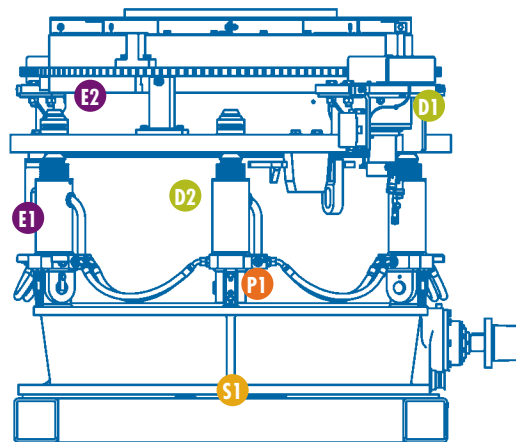
Making daily, monthly and annual numbers means keeping a constant eye on the bottom line. And you can't do that if you're concerned about keeping your machinery up and running. The Kodiak[®] Plus Series' patented innovations provide the efficiency needed to hit your financial goals and the worry-free operation you demand from rugged machinery.

PERFORMANCE

- P1 Roller Bearings**
Precision design generates higher efficiencies, reducing re-circulating loads and operating temperatures. Highly tolerant of climate and temperature fluctuations.

DURABILITY

- D1 Thread Locking Ring**
360-degree ring replaces individual cylinders and acts as a single piston providing low maintenance, leak-free operation preventing bowl creep.
- D2 Internal Counterweights**
Fully protected counterweights eliminate the need for replacements and maintains true balance through the life of the machine.



SAFETY

- S1 Cone Brake**
Anti-spin feature reduces manganese wear cost and minimizes projectiles for improved safety.

EASE-OF-USE

- E1 Tramp Iron Relief System**
Eliminate maintenance costs associated with accumulators. Pressure relief valves act as a latch, generating minimal back pressure build-up during an event.
- E2 Brass Lined U-Seat**
Replaceable brass seat provides extra protection from u-seat damage.

STANDARD WARRANTY

The standard warranty period is (1) year or two-thousand (2000) hours, whichever comes first, from date of delivery to the first end user.



Maximum Efficiency | Worry-Free Operation | Robust Construction

BENEFITS

Meets coarse and fine crushing application requirements.

Higher crushing efficiency reduces load recirculation.

Robust, state-of-the-art design for longevity and reduced costs.

On-the-fly adjustability for easy operation.

MODEL	Head Diameter (in / mm)	Weight (lbs / kg)	Capacity Up To (tph / mpth)
K200+	40 / 1016	33,500 / 15,196	385/349
K300+	45 / 1143	45,500 / 20,639	460/417
K400+	54 / 1372	58,600 / 26,580	625/567



LS CONE

LS Series roller-bearing cone crushers deliver reliable performance for most any aggregate and mining application. From sand and gravel to shot rock, LS Series cone crushers offer secondary, tertiary and quaternary reduction performance in both stationary and portable configurations. For reduced operating costs, extended life and unmatched reliability, KPI-JCI LS Series cone crushers are the dependable choice.

PERFORMANCE

P1 Roller Bearings

A precision design that generates higher efficiencies, reducing load recirculation and operating temperatures and is highly tolerant of climate and temperature fluctuations.

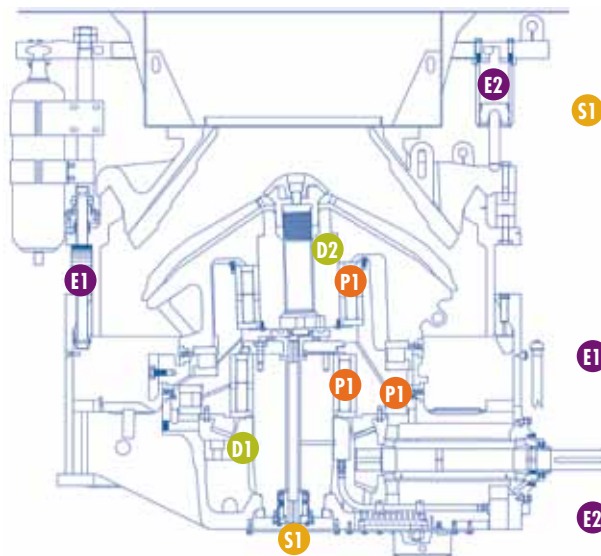
DURABILITY

D1 Frame Design

Utilizing a shrink-to-fit center section base frame, this design resists stress related cracking for a longer service life.

D2 Two Piece Cone

Utilizing a shrink-to-fit cone stem, this two piece cone head design resists stress related cracking for a longer service life.



SAFETY

S1 Cone Brake

This anti-spin feature reduces manganese wear costs while minimizing projectiles for improved safety.

EASE-OF-USE

E1 Closed-Side Setting Adjustment

A manual shim CSS adjustment reduces maintenance costs and provides simple adjustment.

E2 Tramp Iron Relief System

All relief cylinder and accumulators can be lifted off in a single piece for reduced downtime during maintenance.



Proven Dependability | Consistent Performance | Unmatched Reliability

MODEL	Diameter (in / mm)	Weight (lbs / kg)	Capacity Up To (tph / mpth)
1200LS	45 / 1143	30,850 / 13,993	385 / 349
1400LS	54 / 1372	43,765 / 19,852	480 / 435

BENEFITS

Proven design refined over three decades ensures reliability and longevity.

Anti-friction bearings hold tolerances for reliable performance throughout the life of the crusher.

Two-piece cone head designed with high strength shafting.

Simple, low-cost manual close-side-setting adjustment.

ANDREAS HSI

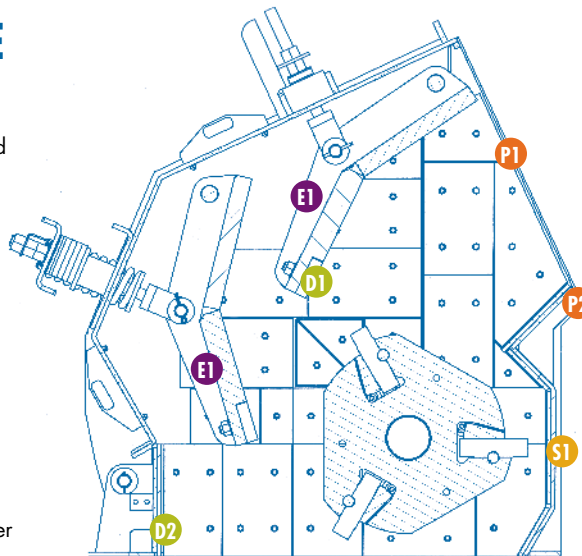
Accommodating three or four blow bar configurations, Andreas Series HSI crushers offer the adaptability and capacity required to meet the fast-changing aggregate market. Feed opening, MPR rotor, and the crushing chamber make these impact crushers well suited for recycle and aggregate processing applications.

PERFORMANCE

- P1 Feed Opening**
Provides optimal material transition and is well suited for aggregate and recycling applications.
- P2 MPR Rotor**
Our Maximum Performance Rotor provides the rugged performance characteristics of a solid rotor with the accessibility of a segmented rotor.

EASE-OF-USE

- E1 Dual Aprons**
Adjust independently from each other providing maximum application flexibility.



SAFETY

- S1 Crusher Housing**
Hydraulically opens over center for safe and easy maintenance access.

DURABILITY

- D1 Apron Wear Tips**
Replacement bars extend apron life through increased protection — thus reducing downtime.
- Wear Liners**
D2 Bolt-on design eliminates costly downtime associated with unprotected surfaces that are otherwise easily damaged.



Large Capacity | Proven Adaptability | Low Maintenance

ROTOR MODEL	Diameter-Width (in / mm)	Weight (lbs / kg)	Capacity Up To (tph / mph)
4233	42 / 1069 - 33 / 828	23,300 / 10,569	200 / 181
4240	42 / 1069 - 40 / 1016	24,500 / 11,113	250 / 227
4250	42 / 1069 - 50 / 1269	28,200 / 12,792	300 / 272
5260	52 / 1320 - 60 / 1523	38,000 / 17,591	450 / 408

BENEFITS

Dual aprons adjust independently to provide maximum application flexibility.

Innovative, maximum production rotor (MPR) design.

Replaceable liners protect entire crushing chamber.

Blow bar options to meet specific application requirements.

STANDARD WARRANTY

KPI-JCI offers "the best HSI warranty in the business". When you purchase a KPI-JCI HSI you can rest easy because quality is a given. The Double Nickel Warranty from KPI-JCI covers you for 5 years and 5 months. Contact your nearest dealer for complete details.

NEW HOLLAND HSI

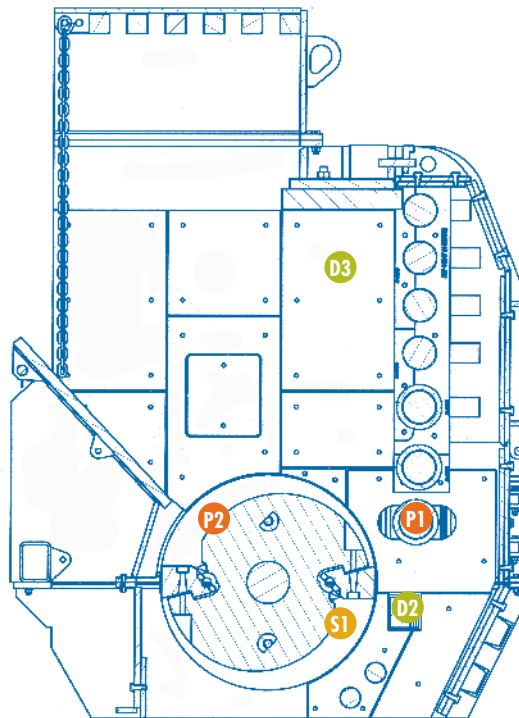
With over 40 years of field-proven results, New Holland Series HSI crushers consistently provide profitable impact performance. The solid rotor design makes quick work of any hard rock application, while performing equally well in asphalt and concrete recycling operations. Available in either stationary or portable configurations, New Holland Series HSI crushers fit easily into your operation.

PERFORMANCE

- P1 Adjustable Impact Bars**
A highly adjustable design that provides optimum flexibility in producing multiple material sizes.
- P2 Solid Rotor**
For maximum stored kinetic energy.

EASE-OF-USE

- E1 Self-Aligning Roller Bearings**
Protected with double sealing arrangement to keep out contaminants.
- E2 Bridge Breaker**
Quickly and easily clears feed material bridge-overs.



SAFETY

- S1 Blowbar Hammers**
Maximum hammer retention for safe operation.

DURABILITY

- D1 Breaker Bars**
Wear resistant manganese impact bar sleeves offer additional protection against abrasion.
- D2 Adjustable Stripper Bar**
Protects the rotor assembly and crusher from damage when non-crushable material enters the crushing chamber.
- D3 Wear Liners**
Bolt-on design eliminates costly downtime associated with damage caused by unprotected surfaces.



Profitable Performance | Multiple Configurations | Proven Design

ROTOR MODEL	Diameter-Width (in / mm)	Weight (lbs / kg)	Capacity Up To (tph / mpth)
3850	38 / 965 - 50 / 1270	40,900 / 18,552	450 / 408
4654	46 / 1168 - 54 / 1372	50,950 / 23,110	750 / 680
6064	64 / 1626 - 60 / 1524	88,600 / 40,188	1019 / 924

BENEFITS

Wear-resistant manganese impact bar sleeves offer additional protection against abrasion.

Liners bolt from outside of structure for maximum holding protection.

Tramp iron safety release on lower breaker bar to protect crusher from non-crushable materials.

VERTICAL SHAFT IMPACT

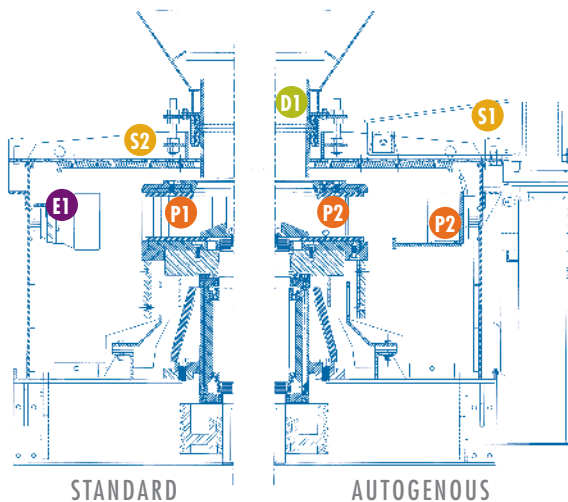
The efficient and versatile design of KPI-JCI's VSI crushers deliver highly consistent end products for jobs that demand precision. KPI-JCI's VSI crushers are available in both stationary and portable configurations and crank out up to 500 TPH. With the capability to run in standard, semi-autogenous and fully autogenous, our models meet the most stringent material specs, allowing you to meet the challenges of any job you face.

PERFORMANCE

- P1 Shoe and Table**
Multiple configurations are available to meet all your abrasive and non-abrasive applications.
- P2 Autogenous Configuration**
Rotor and hybrid rock-self design delivers proper internal crusher geometry for maximum production at the lowest cost.

DURABILITY

- D1 Feed Tube**
Heavy-duty construction and externally adjustable compensates for excessive wear normally experienced by other non-adjustable systems.



SAFETY

- S1 Hydra-Arm**
Optional hydra-arm assembly lifts the crusher lid for 360 degrees of internal crusher viewing which provides safe and efficient access for maintenance.
- S2 Fully Protected**
Lid assembly is equipped with bolt-on liners and large inspection doors for internal component viewing and safe, easy access to wear liners.

EASE-OF-USE

- E1 Anvil Ring**
Adjustable anvil ring provides proper alignment for maximum efficiency and anvil utilization.

STANDARD WARRANTY

The standard warranty period is (1) year or two-thousand (2000) hours, whichever comes first, from date of delivery to the first end user.



Highly Efficient | Unmatched Precision | Proven Flexibility

BENEFITS

Autogenous configuration produces more spec material in a single pass.

Efficient design decreases horsepower requirements.

Reversible, replaceable and adjustable wear parts reduce operating costs.

Multiple shoe table and rotor configurations are easily interchangeable.

MODEL	Feed Tube Diameter (in / mm)	Weight (lbs / kg)	Capacity Up To (tph / mpth)
1500	8.5 / 216	13,200 / 6,000	150 / 136
2500	11.4 / 290	18,000 / 8,182	300 / 272
82	14 / 356	24,000 / 11,000	400 / 363
4500	16 / 406	29,600 / 13,320	500 / 453
120	18 / 457	32,100 / 14,595	500 / 453



CASE STORY: CJ MOYNA & SONS, INC.

CRUSHING ON THE RUN

Tracked Equipment Helps Contractor Meet Deadlines

"In the past, with recycle jobs, we would typically break, haul, crush and truck before we put the material back down," says Jason Marmann, equipment manager for CJ Moyna & Sons Inc., based in Elkader, (eastern) Iowa. But Marmann says Moyna's recycle projects in the past had all been county and state road projects. "Crushing along a 10-mile stretch of Interstate, however – this was a first for us," he says.

Marmann is referring to 10 miles of northbound I-35 in south-central Iowa. The highway was concrete with asphalt overlay, and Moyna had won the bid to pull the old pavement, handle grading, recycle the asphalt and concrete, and place the material back onsite for use as sub-base and granular sub-base prior to paving.

"We have a pretty large fleet of portable and tracked equipment that we use for recycle jobs, in our smaller pits and for added production. But when we won this I-35 project, we knew we needed to find tracked equipment with the production capacity that would allow us to crush all of the material onsite."

The ability to crush recycled asphalt and concrete onsite is not only a cost-saver to the contractor – trucking material is arguably the highest cost incurred in a project such as this, even if the material is recycled for reuse – but the practice is also environmentally friendly and it boosts safety with fewer trucks on the road during the project.

WALK THE LINE

Moyna determined that for the I-35 grading and recycling job, the best solution would be to employ tracked plants that could follow the grade and move under their own power. And Marmann says that ideally Moyna wanted a tracked processing system that would allow the company to crush, screen and windrow material as it simultaneously walked the grade along the highway – crushing on the run, so to speak. "We had another project going on at the same time – a runway project for the Cedar Rapids airport – so we needed mobile equipment that would give us good production, too. So the two projects justified the equipment purchase. The only manufacturer we found with equipment that could process material on the go and meet our production goals was KPI-JCI."

Moyna had worked closely with factory personnel in Yankton, S.D. and Eugene, Ore., as well as their local dealer, Road Machinery & Supplies Co. (RMS), for prior equipment purchases, and this purchase was no different. "We had made factory visits in 2008 and 2009," he says. "And even then we talked opportunities and where we see the market going. They were very hands-on and very open with the lines of communication. They listened and they have adjusted and tailored their products to fit the market." Marmann says this willingness to work with Moyna also played into its ultimate equipment choice. The company made its decision in late 2009, and the tracked machines they ordered, a KPI-JCI FT5260



I-35 site near Osceola, Iowa

horizontal shaft impact (HSI) crushing plant and a KPI-JCI FT6203 6-ft by 20-ft three-deck horizontal screen plant, were delivered to the I-35 site near Osceola, Iowa, in April 2010.

Moyna's responsibility for the I-35 project included pulling up the concrete with its asphalt overlay in a 10-mile stretch along the northbound lanes. The milled asphalt was stockpiled along the outside shoulder. Moyna broke the concrete with an excavator and left it piled along the median shoulder. The asphalt-treated base under the concrete was then chunked and laid on top of the asphalt overlay millings. As the company graded the road site, it crushed the asphalt with a KPI-JCI FT4240 closed-circuit HSI plant and put that material down on the graded road site as sub-base. The FT5260 and FT6203 plants then processed the concrete material, fed at 6-in minus, crushing and screening it to 1-1/2-in for use as granular sub-base. Marmann explains that the granular sub-base provides excellent drainage for stormwater control. And after that step, the paving contractor for the job came in behind Moyna, adding asphalt-treated base followed by concrete pavement slabs to complete the project.

SET UP AND GO

This project was Moyna's first Interstate highway recycling job, and it was KPI-JCI's first setup with an FT5260 and FT6203 crushing and screening as the plants walked the grade. "For a first time for both

sides, it went really well," says Marmann. "If we had questions or little tweaks that needed to be done for our applications, between RMS and KPI-JCI, we could talk to them one day and have a solution by the next. It was pretty flawless. And the beauty of it — this setup is so versatile and usable — at one point when we needed material really quickly in one of our pits, we pulled the plants off of the I-35 job, unloaded at the pit, put the plants together and started crushing, just like that."

From the start, the tracked crusher and screen proved their worth under tight deadlines and unpredictable conditions. "We've had incredible amounts of rain in Iowa in the last two to three years," Marmann says. "We have to have machines that work well when the sun shines, and also allow us to do some recycle processing in the rain."

Despite heavy rains and pulling the new KPI-JCI plants for other applications, CJ Moyna was able to complete its I-35 project on time and within budget. "If the equipment hadn't performed for us, it would have been hard for us to make up for that lost time."

"The only manufacturer we found with equipment that could process material on the go and meet our production goals was KPI-JCI."

- Jason Marmann, Equipment Manager
CJ Moyna & Sons Inc.



MORE UPTIME. MORE PROFITS.

The team at KPI-JCI and Astec Mobile Screens is dedicated to more than just manufacturing the industry's best crushing, screening and washing equipment — we're here to improve the overall effectiveness and strength of your operation. That means focusing on service, support and training as well.

Your customer support team, local KPI-JCI Dealer and factory-trained technicians provide service before, during and, most importantly, after the sale — ensuring your equipment stays up and running with genuine parts and industry-leading service. We even make and stock parts to non-KPI-JCI and Astec Mobile Screens equipment and provide world-class training on every piece of equipment we manufacture.

All that in an effort to keep your operation up and running as efficiently and profitably as possible.

