



KPI/JCI RS Portable Cone Crushing Plant Specifications



• PLANT FEATURES

KPI/JCI K200+/K300+/K400+ Cone Crusher
 Triple Axle Chassis- K300+/K400+
 Tandem Axle Chassis- K200+
 24" x 68# WF main frame beams, Hutch 9700 series suspension, 22,500# axles with 11:00 x 22.5 tires, stationary cribbing supports, standard fifth wheel plate, air brakes, lights and mud flaps, safety guards to known standards
 diamond plate walkways around crusher, 4" toe boards, 42" handrails and access ladder.
 42" Under-Crusher End Delivery Conveyor
 10 HP TEFC electric motor, vulcanized lagged head pulley, self-cleaning wing tail pulley, Dodge SCM bearings, CEMA C sealed idlers, 3 ply belt.
 Crusher feed hopper extension.
 AR lined under crusher hopper with maintenance door.
 RSK200+ 200HP TEFC 1200 RPM crusher motor.
 RSK300+ 300 HP TEFC 1200 RPM crusher motor.
 RSK400+ (2) 200HP TEFC 1200RPM crusher motors.

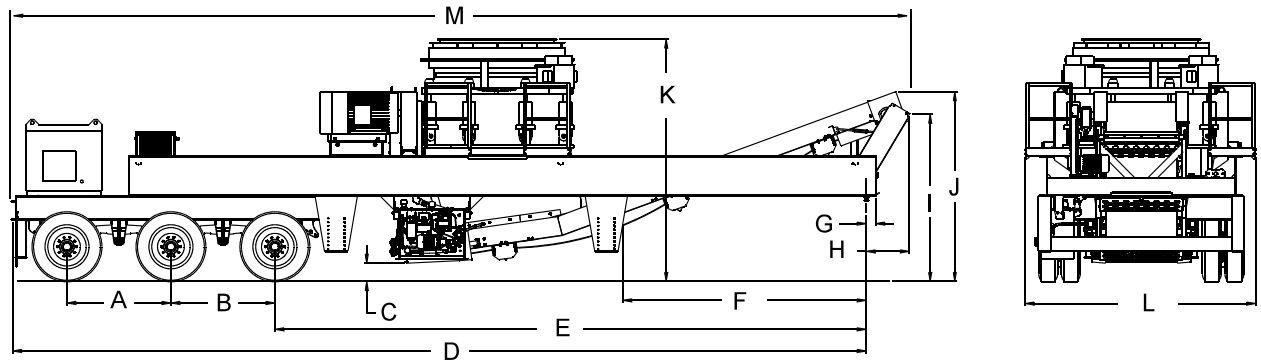
• OPTIONS

Switchgear includes starters for crusher drive and under crusher conveyor, 50' of cord for crusher control pendant.
 Telescoping Support Leg
 Overflow chute.
 Toshiba Motor
 Stabilizing System: (4) cylinder (with 24" stroke run on design) power unit package consisting of either an 8 HP gas (electric start) or 5 HP electric (3/60/460) with fluid reservoir, hydraulic pump and control valves with relief valve (for operating plant on jacks without cribbing)

• APPROXIMATE TRAVEL WEIGHT

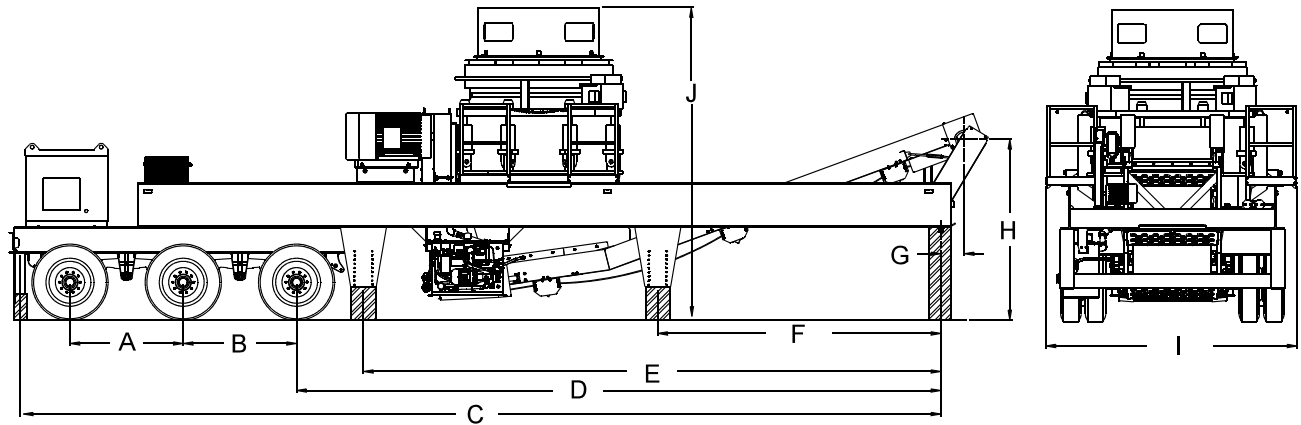
Model	Weight
RSK200+PM	58,000 (26,308 kg)
RSK300+PM	82,500 (37,421 kg)
RSK400+PM	92,000 (41,730 kg)

Travel Dimensions



Plant	A	B	C	D	E	F	G	H	I	J	K	L	M
RSK200+PM	5' 1" (1.5M)	N/A	9" (0.2M)	40' (12.1M)	32' 1" (9.8M)	11' 8" (3.5M)	5" (0.1M)	2' 1" (0.6M)	8' (2.4M)	9' 1" (2.8M)	11' 5" (3.4M)	10' 6" (3.2M)	42' 1" (12.8M)
RSK300+PM	5' 1" (1.5M)	5' 1" (1.5M)	10" (.25M)	41' 10" (12.7M)	28' 11" (8.8M)	11' 11" (3.6M)	5" (0.1M)	2' 1" (0.6M)	8' 1" (2.5M)	9' 2" (2.8M)	11' (3.3M)	10' 5" (3.2M)	43' 11" (13.4M)
RSK400+PM	5' 1" (1.5M)	5' 1" (1.5M)	10" (.25M)	41' 9" (12.7M)	28' 11" (8.8M)	11' 11" (3.6M)	5" (0.1M)	2' 1" (0.6M)	8' 2" (2.5M)	9' 3" (2.8M)	11' 10" (3.6M)	11' 3" (3.4M)	42' 2" (12.8M)

Operating Dimensions



Plant	A	B	C	D	E	F	G	H	I	J
RSK200+PM	5' 1" (1.5M)	N/A	39' 6" (12.0M)	N/A	23' 4" (7.1M)	12' 8" (3.8M)	1' (0.3M)	8' 8" (2.6M)	10' 6" (3.2M)	13' 8" (4.2M)
RSK300+PM	5' 1" (1.5M)	5' 1" (1.5M)	41' 9" (12.7M)	28' 11" (8.8M)	25' 11" (7.9M)	12' 8" (3.9M)	1' (0.3M)	8' 2" (2.5M)	10' 5" (3.2M)	13' 2" (4.0M)
RSK400+PM	5' 1" (1.5M)	5' 1" (1.5M)	41' 9" (12.7M)	28' 11" (8.8M)	25' 11" (7.9M)	12' 8" (3.9M)	1' (0.3M)	8' 1" (2.5M)	11' 3" (3.4)	14' (4.2M)

FOR MORE INFORMATION CALL 1-800-314-4656 AND ASK FOR A ?D&JCI EQUIPMENT SPECIALIST

Note: Specifications are subject to change without notice.

Because KPI-JCI may use in its catalog & literature, field photographs of its products which may have been modified by the owners, products furnished by KPI-JCI may not necessarily be as illustrated therein. Also continuous design progress makes it necessary that specifications be subject to change without notice. All sales of the products of KPI-JCI are subject to the provisions of its standard warranty. KPI-JCI does not warrant or represent that its products meet any federal, state, or local statutes, codes, ordinances, rules, standards or other regulations, including OSHA and MSHA, covering safety, pollution, electrical wiring, etc. Compliance with these statutes and regulations is the responsibility of the user and will be dependent upon the area and the use to which the product is put by the user. In some photographs, guards may have been removed for illustrative purposes only. This equipment should not be operated without all guards attached in their normal position. Placement of guards and other safety equipment is often dependent upon the area and how the product is used. A safety study should be made by the user of the application, and, if required additional guards, warning signs and other safety devices should be installed by the user, wherever appropriate before operating the products.



86470 Franklin Blvd, Eugene, OR 97405
1-800-314-4656 Fax: 541-988-9401

Email: mail@kpieug.com

www.kpijci.com

KPI-JCI RS Plants, Rev 0,07/09 Printed in USA